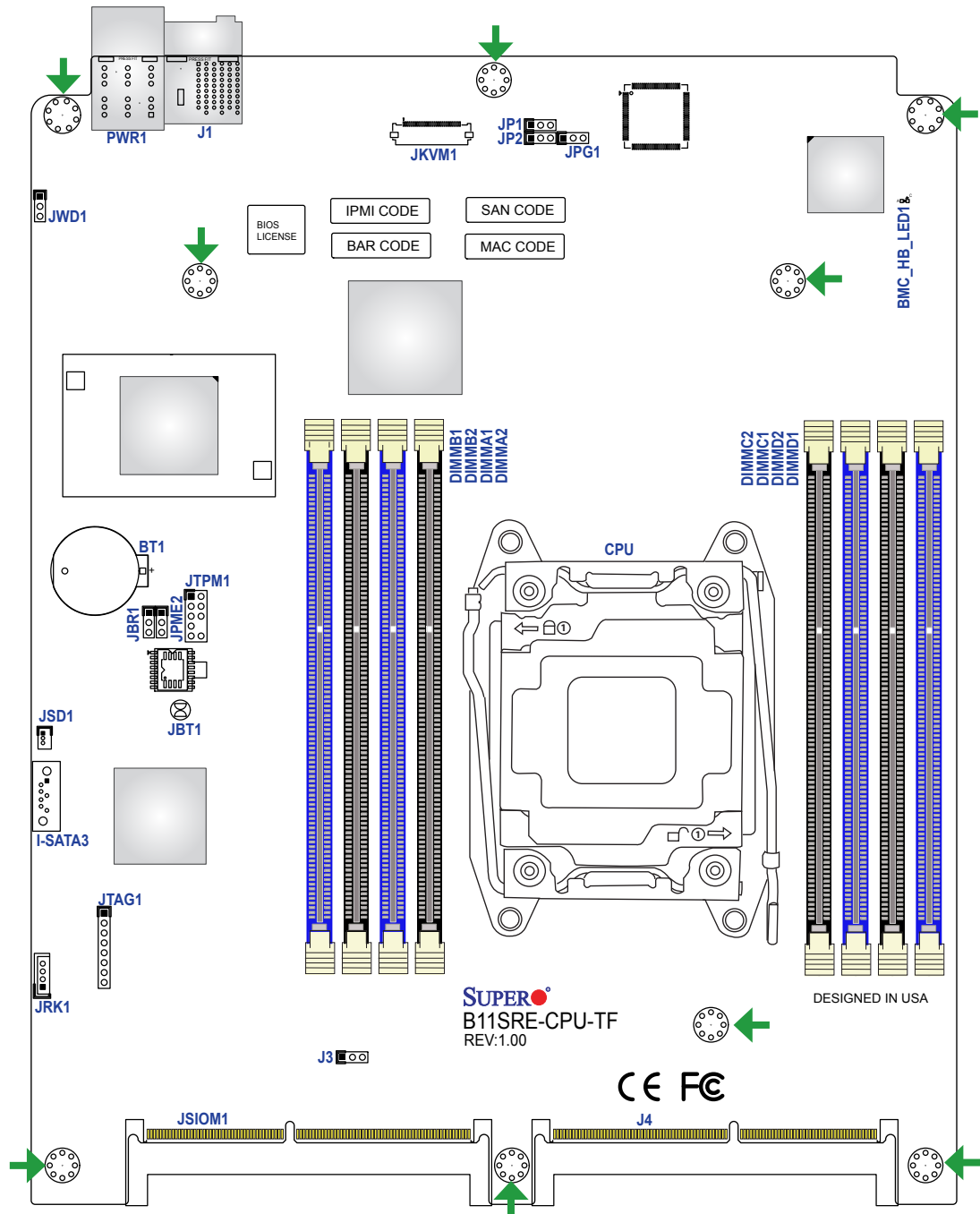




**Motherboard Layout and Features**



**SUPER**  
**B11SRE-CPU-TF**  
 REV:1.00



→ = mounting hole

**Jumpers, Connectors, and LED Indicators**

Jumpers		
Jumper	Description	Default Setting
JBR1	BIOS Recovery	Pins 1-2 (Normal)
JBT1	CMOS Clear	Open (Normal)
JPG1	VGA Enable	Pins 1-2 (Enable)
JPME2	Manufacturing Mode	Pins 1-2 (Normal)
JWD1	Watch Dog Timer	Pins 1-2 (Reset)

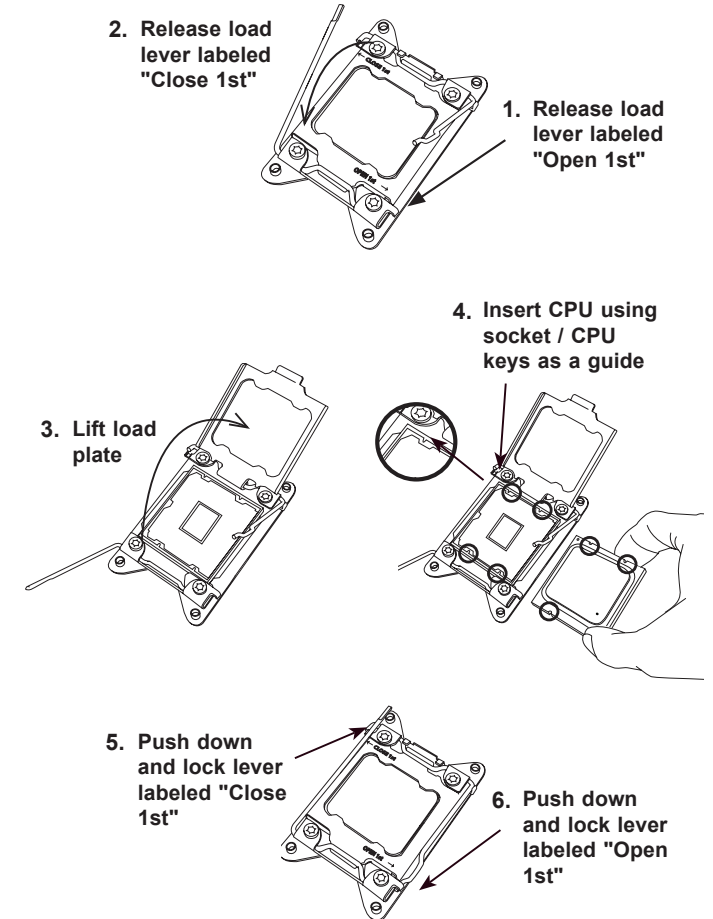
Connectors	
Connector	Description
BT1	Onboard CMOS battery socket
I-SATA3	SATA 3.0 Port
J3	VRM Debug Jumper (Manufacturing Use Only)
J4	PCI-E x16 Slot for I/O Expandability
JKVM1	VGA/USB Module Connector
JP1	PLD Header (Manufacturing Use Only)
JP2	PLD Header (Manufacturing Use Only)
JRK1	Intel RAID Key Header
JSD1	SATA DOM Power Connector
JSIOM1	PCI-E x16 Slot for I/O Expandability
JTAG1	CPU/PCH JTAG (Debug use only)
JTPM1	Trusted Platform Module (TPM)/Port 80 connector
PWR1	Power Receptacle to Chassis Backplane

LED Indicators		
LED	Description	Status
BMC_HB_LED1	BMC Heartbeat LED	Blinking Green: BMC normal

**CPU Support and Installation**

The B11SRE-CPU-TF motherboard supports an Intel® Xeon W family processor in an LGA2066 socket.

**CPU Installation**



**Memory Support**

The B11SRE-CPU-TF motherboard supports up to 512GB LRDIMM/256GB RDIMM DDR4 memory with speeds of up to 2666MHz in eight slots..

Insert the desired number of DIMMs into the memory slots, starting with DIMMA1, DIMMB1, DIMMC1, DIMMD1, then DIMMA2, DIMMB2, DIMMC2, DIMMD2. For the system to work properly, please use the memory modules of the same type and speed.

1 CPU, 8 DIMM Slots	
Number of DIMMs	Memory Population Sequence
1	DIMMA1
2	DIMMA1 / DIMMB1
3	DIMMA1 / DIMMB1 / DIMMC1
4	DIMMA1 / DIMMB1 / DIMMC1 / DIMMD1
5	DIMMA1 / DIMMB1 / DIMMC1 / DIMMD1 / DIMMA2
6	DIMMA1 / DIMMB1 / DIMMC1 / DIMMD1 / DIMMA2 / DIMMB2
7	DIMMA1 / DIMMB1 / DIMMC1 / DIMMD1 / DIMMA2 / DIMMB2 / DIMMC2
8	DIMMA1 / DIMMB1 / DIMMC1 / DIMMD1 / DIMMA2 / DIMMB2 / DIMMC2 / DIMMD2

Note: Graphics shown in this quick reference guide are for illustration only. Your components may or may not look exactly the same as drawings shown in this guide.

Note: Refer to Chapter 1 of the User Manual for detailed information on jumpers, connectors, and LED indicators.

Note: Refer to Chapter 2 of the User Manual for detailed information on memory support and CPU/motherboard installation instructions.