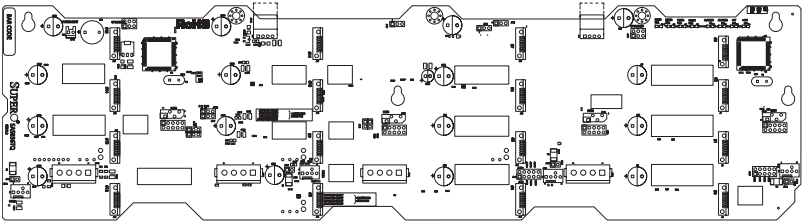


# SUPERO<sup>®</sup>



## SAS-836TQ Backplane

### USER'S GUIDE

Rev. 1.0c

---

The information in this User's Manual has been carefully reviewed and is believed to be accurate. The vendor assumes no responsibility for any inaccuracies that may be contained in this document, makes no commitment to update or to keep current the information in this manual, or to notify any person or organization of the updates. **Please Note: For the most up-to-date version of this manual, please see our web site at [www.supermicro.com](http://www.supermicro.com).**

Super Micro Computer, Inc. ("Supermicro") reserves the right to make changes to the product described in this manual at any time and without notice. This product, including software, if any, and documentation may not, in whole or in part, be copied, photocopied, reproduced, translated or reduced to any medium or machine without prior written consent.

IN NO EVENT WILL SUPERMICRO BE LIABLE FOR DIRECT, INDIRECT, SPECIAL, INCIDENTAL, SPECULATIVE OR CONSEQUENTIAL DAMAGES ARISING FROM THE USE OR INABILITY TO USE THIS PRODUCT OR DOCUMENTATION, EVEN IF ADVISED OF THE POSSIBILITY OF SUCH DAMAGES. IN PARTICULAR, SUPERMICRO SHALL NOT HAVE LIABILITY FOR ANY HARDWARE, SOFTWARE, OR DATA STORED OR USED WITH THE PRODUCT, INCLUDING THE COSTS OF REPAIRING, REPLACING, INTEGRATING, INSTALLING OR RECOVERING SUCH HARDWARE, SOFTWARE, OR DATA.

Any disputes arising between manufacturer and customer shall be governed by the laws of Santa Clara County in the State of California, USA. The State of California, County of Santa Clara shall be the exclusive venue for the resolution of any such disputes. Super Micro's total liability for all claims will not exceed the price paid for the hardware product.

FCC Statement: This equipment has been tested and found to comply with the limits for a Class A digital device pursuant to Part 15 of the FCC Rules. These limits are designed to provide reasonable protection against harmful interference when the equipment is operated in a commercial environment. This equipment generates, uses, and can radiate radio frequency energy and, if not installed and used in accordance with the manufacturer's instruction manual, may cause harmful interference with radio communications. Operation of this equipment in a residential area is likely to cause harmful interference, in which case you will be required to correct the interference at your own expense.

California Best Management Practices Regulations for Perchlorate Materials: This Perchlorate warning applies only to products containing CR (Manganese Dioxide) Lithium coin cells. "Perchlorate Material-special handling may apply. See [www.dtsc.ca.gov/hazardouswaste/perchlorate](http://www.dtsc.ca.gov/hazardouswaste/perchlorate)"

---

**WARNING: Handling of lead solder materials used in this product may expose you to lead, a chemical known to the State of California to cause birth defects and other reproductive harm.**

---

Manual Revision 1.0c  
Release Date: July 25, 2008

Unless you request and receive written permission from Super Micro Computer, Inc., you may not copy any part of this document.

Information in this document is subject to change without notice. Other products and companies referred to herein are trademarks or registered trademarks of their respective companies or mark holders.

Copyright © 2008 by Super Micro Computer, Inc.  
All rights reserved.  
**Printed in the United States of America**

---

---

# Table of Contents

Contacting Supermicro .....	iv
Returning Merchandise for Service .....	v
<b>Chapter 1 Safety Guidelines</b>	
1-1 ESD Safety Guidelines .....	1-1
1-2 General Safety Guidelines .....	1-1
1-3 An Important Note to Users .....	1-2
<b>Chapter 2 Jumper Settings and Pin Definitions</b>	
2-1 Front Connectors and Jumpers .....	2-1
Front Connectors .....	2-1
2-2 Front Connector and Pin Definitions.....	2-2
2-3 Front Jumper Locations and Pin Definitions.....	2-5
Explanation of Jumpers .....	2-5
General Jumper Settings .....	2-5
Fan Jumper Settings.....	2-6
I <sup>2</sup> C and SGPIO Modes and Jumper Settings .....	2-6
SGPIO Setting.....	2-7
SAS Port Connections in I <sup>2</sup> C and SGPIO Settings .....	2-7
Front LED Indicators.....	2-8
Front Pane LEDs .....	2-8
2-4 Rear Connectors and LED Indicators .....	2-9
Rear SAS/SATA Connectors .....	2-9

## Contacting Supermicro

### Headquarters

Address: Super Micro Computer, Inc.  
980 Rock Ave.  
San Jose, CA 95131 U.S.A.

Tel: +1 (408) 503-8000  
Fax: +1 (408) 503-8008  
Email: [marketing@supermicro.com](mailto:marketing@supermicro.com) (General Information)  
[support@supermicro.com](mailto:support@supermicro.com) (Technical Support)

Web Site: [www.supermicro.com](http://www.supermicro.com)

### Europe

Address: Super Micro Computer B.V.  
Het Sterrenbeeld 28, 5215 ML  
's-Hertogenbosch, The Netherlands

Tel: +31 (0) 73-6400390  
Fax: +31 (0) 73-6416525  
Email: [sales@supermicro.nl](mailto:sales@supermicro.nl) (General Information)  
[support@supermicro.nl](mailto:support@supermicro.nl) (Technical Support)  
[rma@supermicro.nl](mailto:rma@supermicro.nl) (Customer Support)

### Asia-Pacific

Address: Super Micro Computer, Inc.  
4F, No. 232-1, Liancheng Rd.  
Chung-Ho 235, Taipei County  
Taiwan, R.O.C.

Tel: +886-(2) 8226-3990  
Fax: +886-(2) 8226-3991  
Web Site: [www.supermicro.com.tw](http://www.supermicro.com.tw)

Technical Support:  
Email: [support@supermicro.com.tw](mailto:support@supermicro.com.tw)  
Tel: 886-2-8226-1900

## **Returning Merchandise for Service**

A receipt or copy of your invoice marked with the date of purchase is required before any warranty service will be rendered. You can obtain service by calling your vendor for a Returned Merchandise Authorization (RMA) number. When returning to the manufacturer, the RMA number should be prominently displayed on the outside of the shipping carton, and mailed prepaid or hand-carried. Shipping and handling charges will be applied for all orders that must be mailed when service is complete.

For faster service, RMA authorizations may be requested online (<http://www.supermicro.com/support/rma/>).

Whenever possible, repack the backplane in the original Supermicro box, using the original packaging materials. If these are no longer available, be sure to pack the backplane in an anti-static bag and inside the box. Make sure that there is enough packaging material surrounding the backplane so that it does not become damaged during shipping.

This warranty only covers normal consumer use and does not cover damages incurred in shipping or from failure due to the alteration, misuse, abuse or improper maintenance of products.

During the warranty period, contact your distributor first for any product problems.

## Chapter 1

# Safety Guidelines

To avoid personal injury and property damage, carefully follow all the safety steps listed below when accessing your system or handling the components.

### 1-1 ESD Safety Guidelines

*Electric Static Discharge (ESD) can damage electronic components. To prevent damage to your system, it is important to handle it very carefully. The following measures are generally sufficient to protect your equipment from ESD.*

- Use a grounded wrist strap designed to prevent static discharge.
- Touch a grounded metal object before removing a component from the antistatic bag.
- Handle the RAID card by its edges only; do not touch its components, peripheral chips, memory modules or gold contacts.
- When handling chips or modules, avoid touching their pins.
- Put the card and peripherals back into their antistatic bags when not in use.

### 1-2 General Safety Guidelines

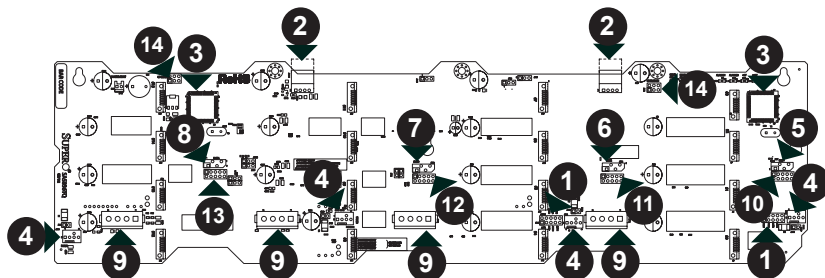
- Always disconnect power cables before installing or removing any components from the computer, including this backplane.
- Disconnect the power cable before installing or removing any cables from this backplane.
- Make sure that the this backplane is securely and properly installed on the motherboard to prevent damage to the system due to power shortage.

## **1-3 An Important Note to Users**

- All images and layouts shown in this user's guide are based upon the latest PCB Revision available at the time of publishing. The card you have received may or may not look exactly the same as the graphics shown in this manual.

## Chapter 2 Jumper Settings and Pin Definitions

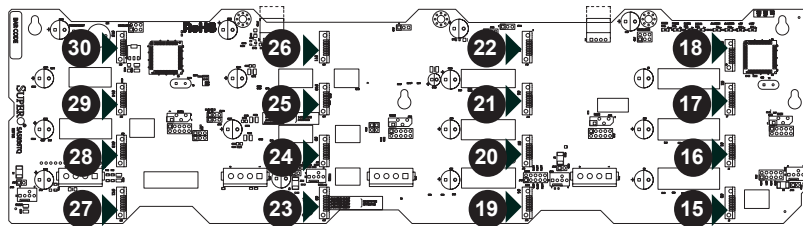
### 2-1 Front Connectors and Jumpers



#### Front Connectors

- |  |                       |
|--|-----------------------|
| #1. ACT_IN#0-15: JP26 and JP47                           | #15. SAS Port #0 J5   |
| #2. DVD-ROM/Floppy Drive Power: JP105 and JP106          | #16. SAS Port #1 J6   |
| #3. Chip: MG9072   | #17. SAS Port #2 J7   |
| #4. Fan Connectors: JP54, JP56, JP58 and JP60            | #18. SAS Port #3 J8   |
| #5. I <sup>2</sup> C Connector#1 JP37                    | #19. SAS Port #4 J10  |
| #6. I <sup>2</sup> C Connector#2 JP95                    | #20. SAS Port #5 J12  |
| #7. I <sup>2</sup> C Connector#3 JP52                    | #21. SAS Port #6 J14  |
| #8. I <sup>2</sup> C Connector#4 JP96                    | #22. SAS Port #7 J16  |
| #9. Power Connectors (4-pin): JP10, JP13, JP46, and JP48 | #23. SAS Port #8 J22  |
| #10. SideBand Connector#1 JP66                           | #24. SAS Port #9 J23  |
| #11. SideBand Connector#2 JP68                           | #25. SAS Port #10 J24 |
| #12. SideBand Connector#3 JP75                           | #26. SAS Port #11 J25 |
| #13. SideBand Connector#4 JP77                           | #27. SAS Port #12 J26 |
| #14. Upgrade Connectors: JP69 and JP78                   | #28. SAS Port #13 J29 |
|  | #29. SAS Port #14 J30 |
|  | #30. SAS Port #15 J32 |

#### SAS Ports





## 2-2 Front Connector and Pin Definitions

### #1. Activity LED Header

The activity LED headers, designated JP26 and JP47, are used to indicate the activity status of each SAS drive. These activity LED headers are used by the host controller for the SATA drives that previously had no activity status output. If using a SAS drive, and for most SATA drives, these activity headers are not required. The Activity LED Header is located on the front panel. For the Activity LED Header to work properly, connect using a 10-pin LED cable.

SAS Activity LED Header Pin Definitions (JP26)			
Pin #	Definition	Pin #	Definition
1	ACT IN#0	6	ACT IN#4
2	ACT IN#1	7	ACT IN#5
3	ACT IN#2	8	ACT IN#6
4	ACT IN#3	9	ACT IN#7
5	Ground	10	Empty

SAS Activity LED Header Pin Definitions (JP47)			
Pin #	Definition	Pin #	Definition
1	ACT IN#8	6	ACT IN#12
2	ACT IN#9	7	ACT IN#13
3	ACT IN#10	8	ACT IN#14
4	ACT IN#11	9	ACT IN#15
5	Ground	10	Empty

### #2. CD-ROM/Floppy 4-Pin Connectors

The 4-pin connectors, designated JP105 and JP106, provide power to the CD-ROM and floppy drives. See the table on the right for pin definitions.

CD-ROM/ FDD Power 4-Pin Connector (JP105 and JP106)	
Pin#	Definition
1	+5V
2 and 3	Ground
4	+12V

### #3. MG9072 Chip

The MG9072 is an enclosure management chip that supports the SES-2 controller and SES-2 protocols.

#### #4. Fan Connectors

The 4-pin connectors, designated JP54, JP56, JP58 and JP60, provide power to the fans. See the table on the right for pin definitions. These 4-pin connectors are compatible with 3-pin and 4-pin fans.

Fan Connectors (JP54, JP56, JP58, and JP60)	
Pin#	Definition
1	Ground
2	+12V
3	Tachometer
4	No connection

#### #5., #6., #7., #8. I<sup>2</sup>C Y-Cable Connectors

The I<sup>2</sup>C Y-cable connectors, designated JP37, JP52, JP95, and JP96, are for enclosure management of the I<sup>2</sup>C mode connection. These connectors are used only if the I<sup>2</sup>C is not embedded into the sideband connectors. See the table on the right for pin definitions.

I <sup>2</sup> C Y-Cable Connector Pin Definitions (JP37, JP52, JP95, and JP96)	
Pin#	Definition
1	Data
2	Ground
3	Clock
4	No Connection

#### #9. Backplane Main Power Connectors

The 4-pin connectors, designated JP10, JP13, JP46, and JP48, provide power to the backplane. See the table on the right for pin definitions. All four of these connectors must be used at the same time.

Backplane Main Power 4-Pin Connector (JP10, JP13, JP46, and JP48)	
Pin#	Definition
1	+12V
2 and 3	Ground
4	+5V

#### #10., #11., #12., #13. Sideband Headers

The sideband headers are designated JP66, JP68, JP75 and JP77. are for enclosure management of the SGPIO mode connection. See the table to the right for pin definitions.

Sideband Headers (JP66, JP68, JP75 and JP77)			
Pin #	Definition	Pin #	Definition
2	<b>SGPIO:</b> SDIN  <b>I<sup>2</sup>C:</b> Backplane Addressing (SB5)	1	Controller ID (SB6)
4	<b>SGPIO:</b> SDOUT  <b>I<sup>2</sup>C:</b> Reset (SB4)	3	GND (SB2)
6	GND (SB3)	5	<b>SGPIO:</b> SLOAD <b>I<sup>2</sup>C:</b> SDA (SB1)
8	Backplane ID (SB7)	7	<b>SGPIO:</b> SLOCK <b>I<sup>2</sup>C:</b> SCL (SB0)
10	No Connec- tion	9	No Connection

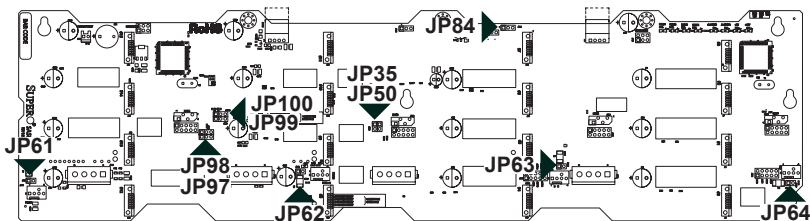
#### **#14. Upgrade Connectors**

The upgrade connectors are designated JP69 (for U19) and JP78 (for U40). Upgrade connectors are for manufacturing use only.

#### **#15-#30. SAS Ports**

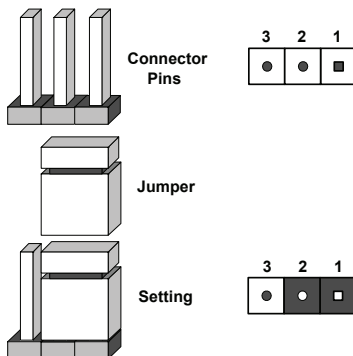
The SAS ports are used to connect the SAS drive cables. The 16 ports are designated #0 - #15. Each port is also compatible with SATA drives.

## 2-3 Front Jumper Locations and Pin Definitions



### Explanation of Jumpers

To modify the operation of the backplane, jumpers can be used to choose between optional settings. Jumpers create shorts between two pins to change the function of the connector. Pin 1 is identified with a square solder pad on the printed circuit board.



**Note:** On two pin jumpers, "Closed" means the jumper is on and "Open" means the jumper is off the pins.

### General Jumper Settings

Jumper	Jumper Settings	Note
JP35	Open: Default Closed: Reset	9072 Chip Reset #1
JP50	Open: Default Closed: Reset	9072 Chip Reset #2

## Fan Jumper Settings

The SAS-836TQ backplane can use up to four fans. To utilize each fan, you must configure both jumpers as instructed below.

Fan Jumper Settings		
Jumper	Jumper Settings	Note
JP61	Closed: With Fan (default) Open: No Fan	Fan#1 Enable/Disable
JP54		Fan#1 Connector
JP62	Closed: With Fan (default) Open: No Fan	Fan#2 Enable/Disable
JP56		Fan#2 Connector
JP63	Closed: With Fan (default) Open: No Fan	Fan#3 Enable/Disable
JP58		Fan#3 Connector
JP64	Closed: With Fan (default) Open: No Fan	Fan#4 Enable/Disable
JP60		Fan#4 Connector
JP97	1-2 With Fan (default) 2-3 No Fan	Fan #1 Selection for MG907X Monitor
JP98	1-2 With Fan (default) 2-3 No Fan	Fan #2 Selection for MG907X Monitor
JP99	1-2 With Fan (default) 2-3 No Fan	Fan #3 Selection for MG907X Monitor
JP100	1-2 With Fan (default) 2-3 No Fan	Fan #4 Selection for MG907X Monitor

## I<sup>2</sup>C and SGPIO Modes and Jumper Settings

This backplane can utilize I<sup>2</sup>C or SGPIO. SGPIO is the default mode and can be used without making changes to your jumpers. The following information details which jumpers must be configured to use SGPIO mode or restore your backplane to I<sup>2</sup>C mode.

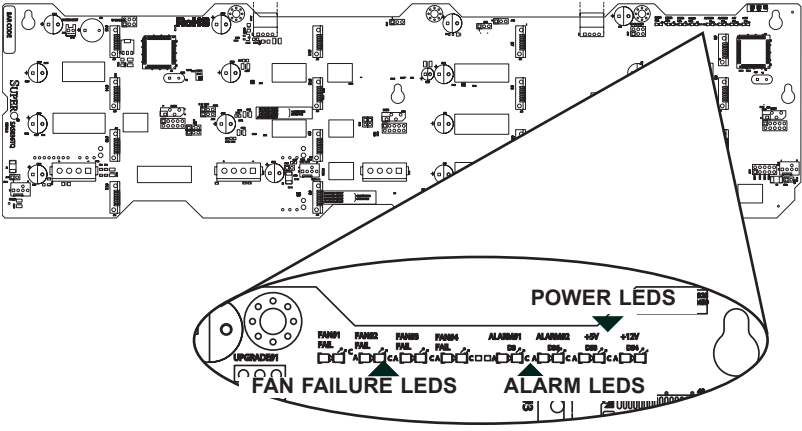
SGPIO/I <sup>2</sup> C Setting		
Jumper	Jumper Setting	Note
JP84	1-2 (default)	SGPIO Mode
JP84	2-3	I <sup>2</sup> C Mode

## SAS Port Connections in I<sup>2</sup>C and SGPIO Settings

Use the following chart when connecting this backplane. If you connect the SAS ports out of order, you will not be able to easily identify drives using the LED function.

<b>SAS Port Connections in I<sup>2</sup>C and SGPIO Settings</b>		
<b>Port #</b>	<b>I<sup>2</sup>C</b>	<b>SGPIO</b>
# 0 - 3	I <sup>2</sup> C #1	Sideband #1
# 4 - 7	I <sup>2</sup> C #2	Sideband #2
# 8 - 11	I <sup>2</sup> C #3	Sideband #3
# 12 - 15	I <sup>2</sup> C #4	Sideband #4

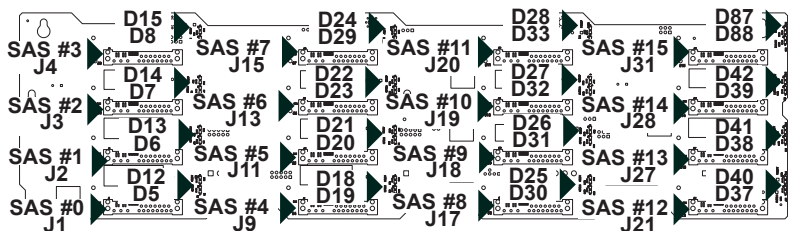
### Front LED Indicators



### Front Pane LEDs

LED	STATE	SPECIFICATION
Fan #1 Fail	ON	Failure in Fan #1
Fan #2 Fail	ON	Failure in Fan #2
Fan #3 Fail	ON	Failure in Fan #3
Fan #4 Fail	ON	Failure in Fan #4
Alarm #1	ON	Overheat/Fan Failure/Drive Failure in Channel 1
Alarm #2	ON	Overheat/Fan Failure/Drive Failure in Channel 2
+5V	OFF	Backplane power failure. Light is on during normal operation.
+12V	OFF	Backplane power failure. Light is on during normal operation.

## 2-4 Rear Connectors and LED Indicators



**Rear SAS/SATA Connectors**

Rear Connector	SAS Drive Number	Rear Connector	SAS Drive Number
SAS #0	SAS/SATA HDD #0	SAS #8	SAS/SATA HDD #8
SAS #1	SAS/SATA HDD #1	SAS #9	SAS/SATA HDD #9
SAS #2	SAS/SATA HDD #2	SAS #10	SAS/SATA HDD #10
SAS #3	SAS/SATA HDD #3	SAS #11	SAS/SATA HDD #11
SAS #4	SAS/SATA HDD #4	SAS #12	SAS/SATA HDD #12
SAS #5	SAS/SATA HDD #5	SAS #13	SAS/SATA HDD #13
SAS #6	SAS/SATA HDD #6	SAS #14	SAS/SATA HDD #14
SAS #7	SAS/SATA HDD #7	SAS #15	SAS/SATA HDD #15

**Rear LED Indicators**

Rear LED	Hard Drive Activity	Failure LED
SAS #0	D12	D5
SAS #1	D13	D6
SAS #2	D14	D7
SAS #3	D15	D8
SAS #4	D18	D19
SAS #5	D21	D20
SAS #6	D22	D23
SAS #7	D24	D29
SAS #8	D25	D30
SAS #9	D26	D31
SAS #10	D27	D32
SAS #11	D28	D33
SAS #12	D40	D37
SAS #13	D41	D38
SAS #14	D42	D39
SAS #15	D87	D88



Disclaimer (cont.)

The products sold by Supermicro are not intended for and will not be used in life support systems, medical equipment, nuclear facilities or systems, aircraft, aircraft devices, aircraft/emergency communication devices or other critical systems whose failure to perform be reasonably expected to result in significant injury or loss of life or catastrophic property damage. Accordingly, Supermicro disclaims any and all liability, and should buyer use or sell such products for use in such ultra-hazardous applications, it does so entirely at its own risk. Furthermore, buyer agrees to fully indemnify, defend and hold Supermicro harmless for and against any and all claims, demands, actions, litigation, and proceedings of any kind arising out of or related to such ultra-hazardous use or sale.